



# The Fountain Gallery, Hampton Court

This month Monocle visits this Hampton Court gem and takes an advance look at its exhibitions for the next few weeks...

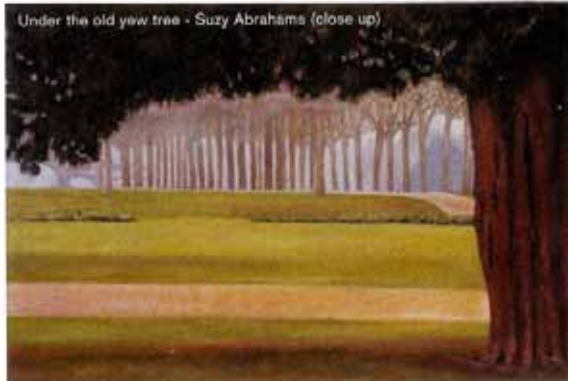
The Fountain Gallery was the brainchild of Liz Butt and Andrew Blyth, an architect who wanted to develop his great interest in painting and lifelong desire to open his own gallery. "We spent a great deal of time searching for the best location and eventually found a little old junk shop in the Hampton Court riverside area of Bridge Rd," says Andrew. "The road is renowned for its attractive character and browsable shops," adds Liz.

Andrew used his expertise to convert the dark, cramped space into a light, airy and inspiring venue for local artists. A fountain was installed, to be seen from the roadside, to symbolise the gallery. The grand opening and 'switching

on' of the fountain in October 1999 was attended by the Lord Mayor.

After three years of running the gallery, "Liz and I hit on the idea of

forming an artist's co-operative so that I could devote more of my time to painting," says Andrew. It immediately proved a great success.



Under the old yew tree - Suzy Abrahams (close up)

## gallery of the month

Les Filles Spice - Jo Buonaguidi (mixed media)



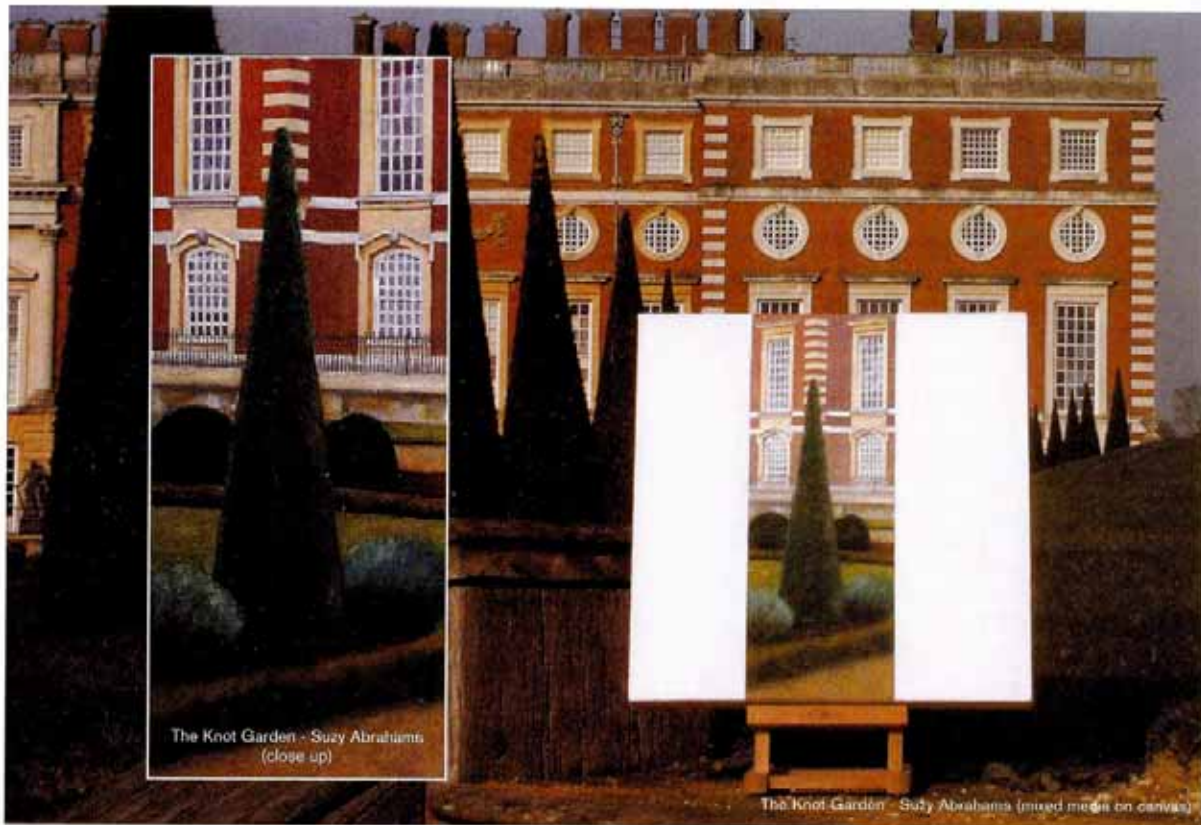
expressions of Aboriginal culture and spirituality which are artistically and emotionally very powerful and moving. I found myself very responsive to the beauty of the mark-making which is central to Aboriginal art, and it is this which has been the inspiration for my recent work."

"On this occasion," says Adrienne, "I have asked three very talented artists, working in different media, to join me - Jim Woodman, an oil painter of vibrant landscapes and also a Resident Member of the Gallery, Lin Osborn a photographer of original and beautifully-composed images, and Paul Baden, an award-winning sculptor who produces striking figures in wood."

**"Squares & Circles, Colour & Form" runs from Bank holiday Monday 26 May until Sunday 8 June at the Fountain Gallery.**

Fountain Gallery  
26 Bridge Rd, Hampton Ct, East Molesey, Surrey KT8 9HA.  
Telephone: 020 8941 5865  
Open Tues- Sun 11.30am - 5.30pm  
Closed Mondays but open Monday 26 May (Bank Holiday)  
For more information visit [www.fountaingallery.co.uk](http://www.fountaingallery.co.uk)

*"Also, as we man our own shows, we have an opportunity of talking to the visiting public about our works, and I find this kind of feed-back very helpful..."*



The Knot Garden - Suzy Abrabams (close up)

The Knot Garden - Suzy Abrabams (mixed media on canvas)

surroundings of the gardens but when passers by entered the frames it all made sense!"

The resulting photos have a contemporary, almost installation-like quality to them yet Suzy's careful observations of the beautifully restored 18th century Privy Garden and the massive mushroom-shaped yew trees of The Great Fountain Gardens remind us of the past.

"I could imagine that some 17th or 18th century young lady artist had just been interrupted and left her completed canvas in situ while she cleared away her equipment! I really like the canvases - both for themselves and against the backdrop of the palace. The canvases sit very neatly into the landscape without creating the impression that they are part of the landscape," comments Sue Whittaker, Customer Relations Manager, Hampton Court Palace.

Suzy's work will be complemented by bowls, vases and pots made from local wood harvested in Surrey by woodturners Brian Ash and Jeff Cordery. Suzy's galleries can be viewed online at [www.suzyabrahams.com](http://www.suzyabrahams.com).

**"Glimpses" will run from  
Tuesday 13 May -  
Sunday 25 May 2008  
at the Fountain Gallery.**

Adrienne Dangerfield has been exhibiting regularly at the Fountain Gallery since 2003. "In my experience," she says, "this is a quite unique gallery. There's a great sense of community with the other artists, and a lot of mutual support. Also, as we man our own shows, we have an opportunity of talking to the visiting public about our works, and I find this kind of feed back very helpful in my development as an artist"

An Australian who has spent most of her adult life in the UK, Adrienne feels that her fascination with strong, clear colour is due largely to her early experience of the intense light of her childhood, particularly of the coastal area where she lived. Over the past four years Adrienne has moved from painting in a stylised, semi-representational way to a more abstract form of expression.

Whilst on a recent trip to her home country, Adrienne spent much of her time looking at Aboriginal works of art, both modern and traditional. "It has left a lasting impression on me," she says. "The wonderful designs result in

Slow Drift - Adrienne Dangerfield (oil on canvas)



Green stones - Adrienne Dangerfield (oil on canvas)



## gallery of the month



*"The gallery has grown in reputation and can now boast being one of the best known in the area..."*

with the management being shared and each member artist having their own exhibition slot in the year. "The gallery has grown in reputation and can now boast being one of the best known galleries in the area, unique in having this co-operative arrangement," says Andrew, who still exhibits regularly at the gallery.

Currently there are eighteen artist members working in 2 and 3D media, offering an exciting programme of exhibitions. Visitors to the gallery have the opportunity to meet artists showing their work. There are a limited number of guest

slots during the year, available for non-members. The gallery has a very informative website [www.fountaingallery.co.uk](http://www.fountaingallery.co.uk). Each member artist has a page, introducing themselves and their work with direct links to their own websites. There is also a detailed calendar of forthcoming exhibitions.

During May, four member artists Suzy Abrahams, Jo Buonaguidi, Adrienne Dangerfield and Jim Woodman will be exhibiting their work alongside guest exhibitors.

"The Fountain Gallery has a well justified reputation for supporting its

artists and is known for its friendly atmosphere. All visitors are welcome, whether they are buyers or browsers," says artist member Jo Buonaguidi.

This month, Jo Buonaguidi and guest artist Pat Paxson, are teaming up for a second time to present their distinctive work on both paper and canvas. Each of these artists bases her work on a combination of drawn lines and vivid use of colour. This exhibition is about lines: striking lines, happy lines, dancing lines and crazy scribbles. The way these lines evolve into emotional drawings gives the show its character. "There is a feel good factor, you will leave the gallery with an inner smile!" says Jo.

The work of each artist complements that of the other, resulting in a visually exciting and satisfying exhibition. Jo Buonaguidi was a professional dancer and later worked for many years in the fashion world for the designer Issey Miyake. The influence of both these careers can be seen in her work. Her dancing figures are drawn to music. She uses pen, ink, pastel and water colours to produce her lively and flowing images. Pat Paxson has an M.A. degree in drawing. She experiments with drawing and the energy of mark making, in

conjunction with a vibrant use of colour. Her paintings and drawing include abstract and figurative elements; her images of abstracted human figures are ambiguous yet intriguing.

**"Take a Line" will run from Tuesday 27 April - Sunday 11 May at the Fountain Gallery.**

Suzy Abrahams has been a member of the Fountain Gallery for two years. "Working as an artist can, at times, be an isolating experience, so it is great being part of the Fountain Gallery's supportive network. The gallery is a friendly place," comments Suzy. "I enjoy the direct contact with the public during my exhibitions, as I am able to communicate the inspiration for my work," she says.

Suzy, a Goldsmiths' graduate and former graphic designer, was just taking a pleasant stroll by the River Thames when she became completely overtaken by inspiration to paint the gardens at Hampton Court Palace. She noticed the beautiful ornate ironwork railings that separate the rear of the Privy Garden from the river path. Peering through, she glimpsed the wealth of landscaped gardens surrounding the world famous Palace.

"I became mesmerised by the gardens and found myself returning again and again, to observe different light and seasonal changes, always finding new inspiration," explains Suzy.

Suzy's 'glimpses' are recorded in a series of impressive, three foot square acrylic and mixed media paintings. Also included, are smaller but equally effective paintings with the backdrop of the palace. Her bold approach in using the white space of the canvas combined with her highly developed technique of applying varying grades of sand, add depth, texture and individuality to the collection. "In order to define my glimpses, I felt that I needed white space on the canvas. These areas should not be mistaken for blank areas as they are integral to the paintings," explains Suzy.

The idea of photographing her completed work in the gardens, makes her intentions quite clear. "I felt compelled to experiment further with defining my glimpses. Using the actual environment seemed the perfect solution," she adds "I was surprised how tiny my three foot canvases appeared, once they were placed back in the huge

